

SHIELD



MESA

A surveillance management platform

VIDEO SECURITY

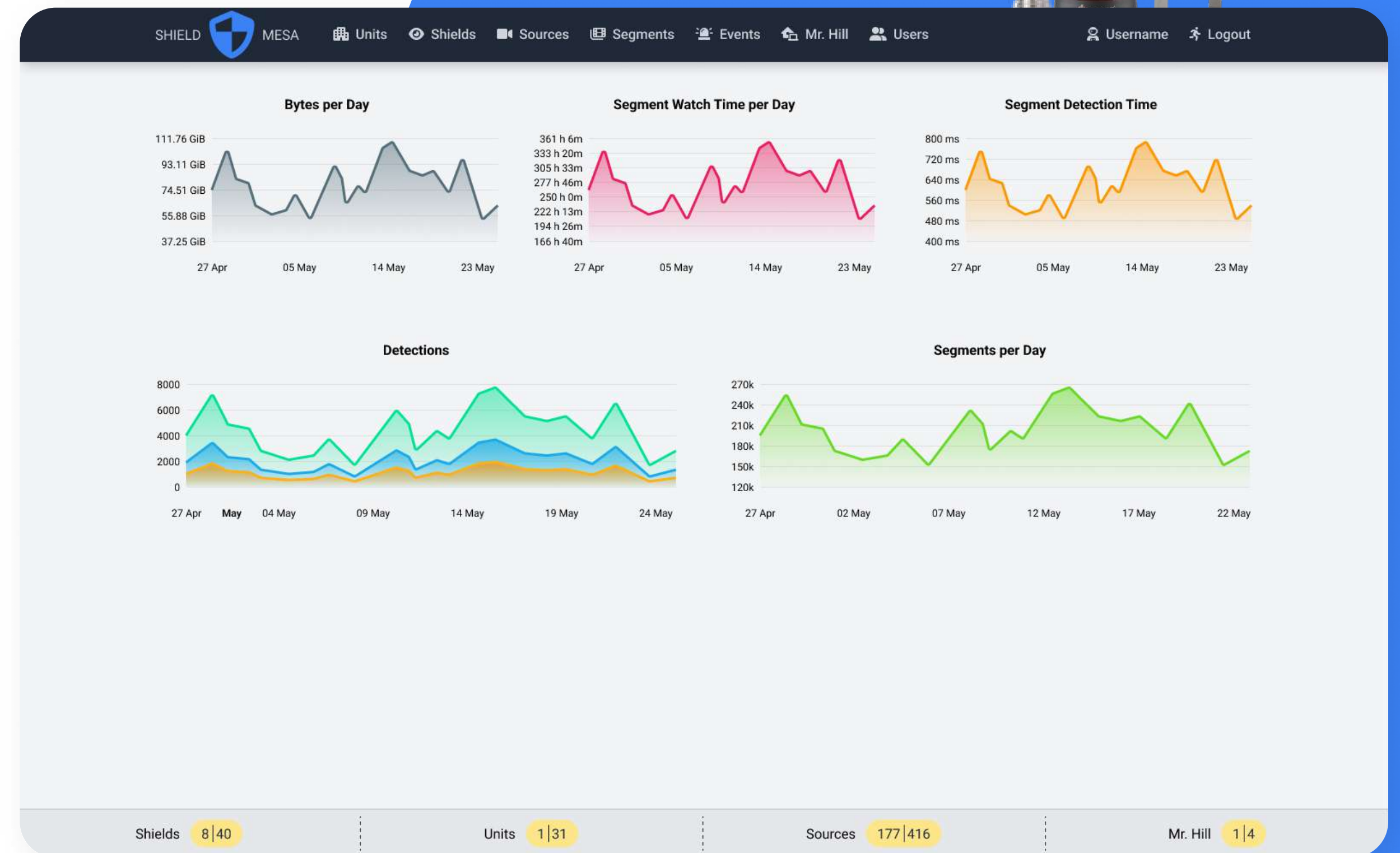


Project description

Shield Mesa is a surveillance management platform that receives data from the video control points, analyzes it, and notifies the responsible staff in case of any emergencies at the facilities.

Main features

- Alerts
- Detecting
- Monitoring
- Analytics
- Controls
- Decision-making




Objective

We aimed to develop a platform that would synchronize with additional services to obtain video data. Then the platform would process it and make decisions, based on machine intelligence, whether to notify the responsible staff to take action.

Solution

Relying on modern technologies, we developed a platform with a complex of additional services that synchronize, analyze, and output the data.

SHIELDMESA

UnitsShieldsSourcesSegmentsEventsMr. HillUsersUsernameLogout

UNITS [31 / 31]

quick search

☐ offline only☐ disarmed only☐ deleted onlyUnit

NAME	SHIELD	SOURCES	LIVE	ARMED	STATUS	ACTION
IT_VEGA_VISION_1	shield-vega-10	12 / 16	Live			
IT_VEGA_VISION_2	shield-vega-20	14 / 14	Live			
IT_VEGA_VISION_3	shield-vega-30	0 / 12			4h	
IT_VEGA_VISION_4	shield-vega-40	12 / 16	Live			
IT_VEGA_VISION_5	shield-vega-50	14 / 14	Live			
IT_VEGA_VISION_6	shield-vega-60	0 / 12			325d 23h	

Shields8|40

Units1|31

Sources177|416

Mr. Hill1|4

Shields8|40

Units1|31

Sources177|416

Mr. Hill1|4

Shields8|40

Units1|31

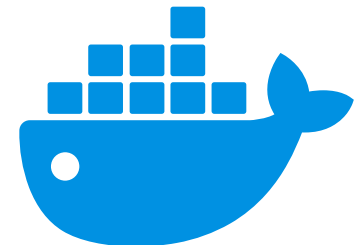
Sources177|416

Mr. Hill1|4

Technologies



Python



Docker



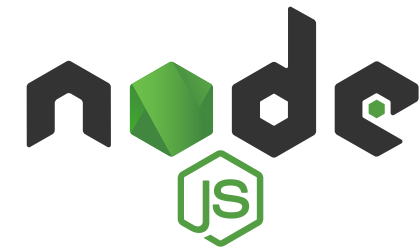
Rabbitmq



Vue.js



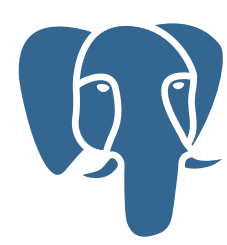
FastAPI



NodeJS



TypeScript



Postgres



Pandas

Timeline & Team

4

team
members

30

weeks of
development

9

technologies of
development



BELICHBERG

Turn your business idea into reality,
on time, and on budget



www.belichberg.com